

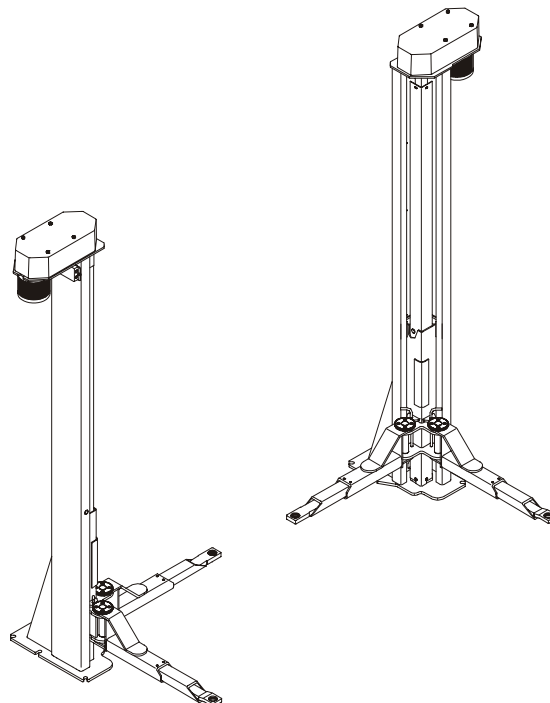
Two Post Lift

ECON II 3.0

for vehicles up to 3,000 kg gross weight

ECON II 3.5

for vehicles up to 3,500 kg gross weight

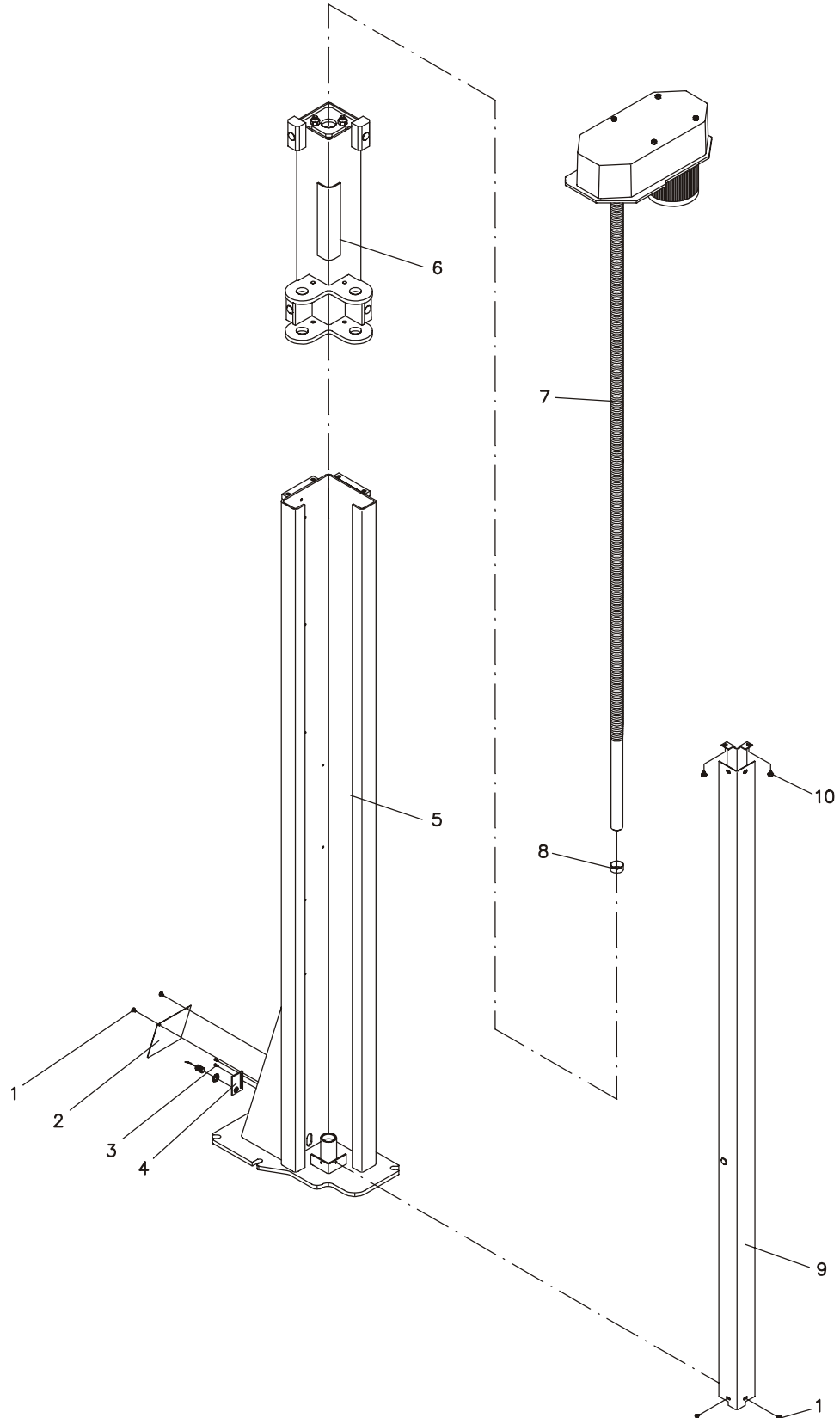


Parts Breakdown

English

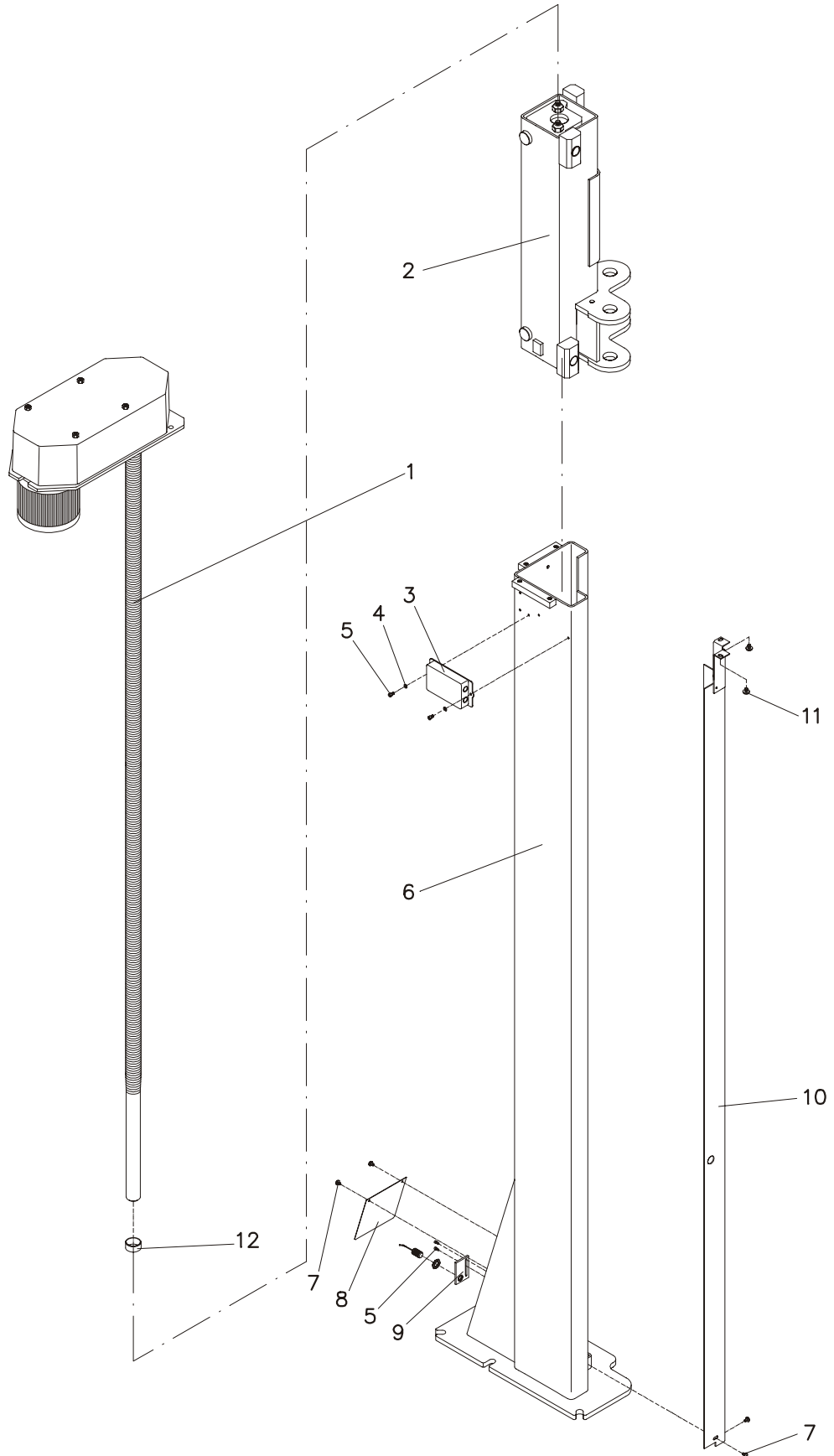
1.1 Columns

1.1.1 Master Column ECON II 3.0



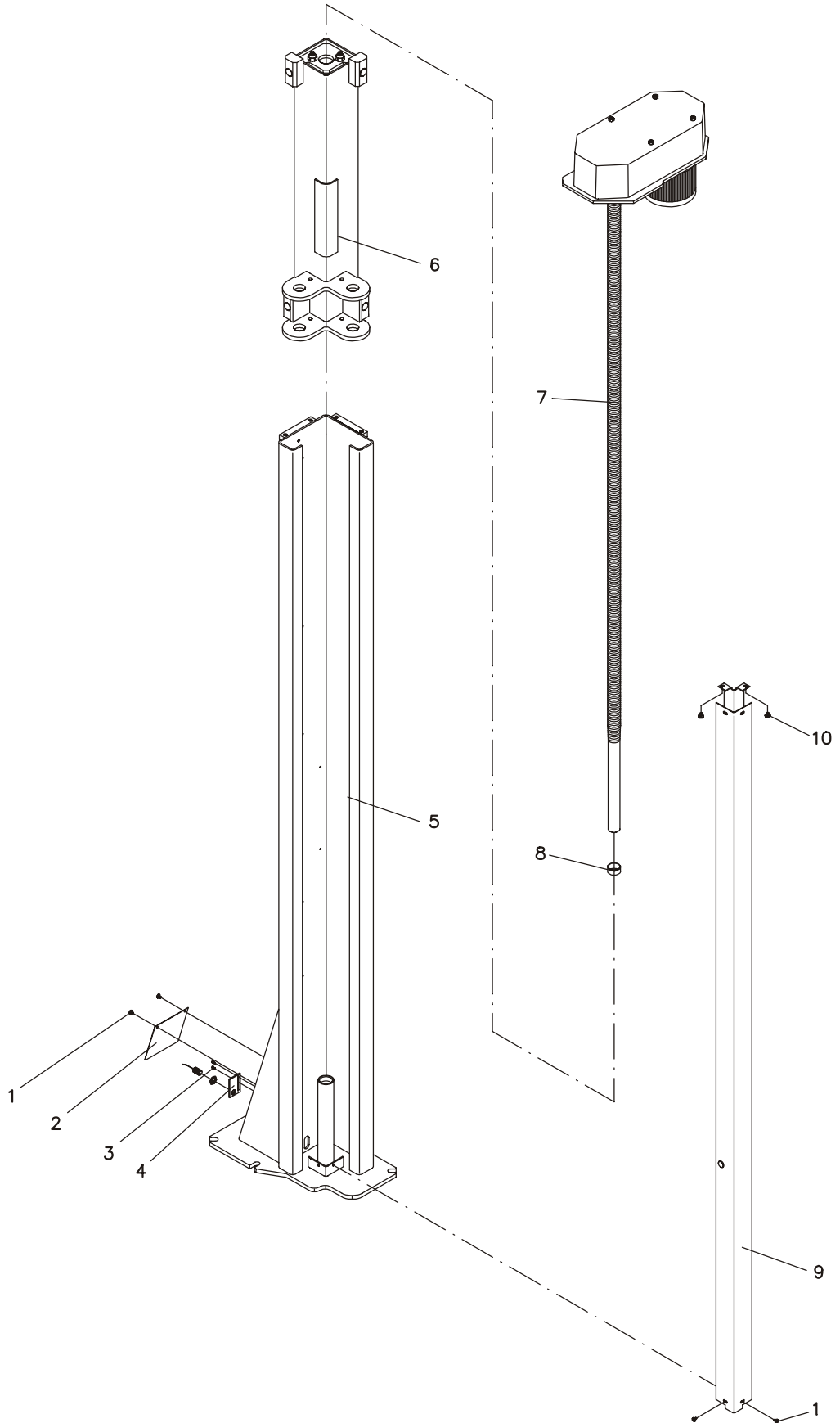
Item	Description
1	Binding Head Screw M6x8
2	Cover Plate, Bottom
3	Allen Screw M6x10
4	Switch Plate
5	Column, Right Side (Master Column)
6	Carriage
7	Drive Assembly, Right Side
8	Plain Bearing GLY.PG 404420 A
9	Lifting Screw Cover
10	Binding Head Screw M8x10

1.1.2 Slave Column ECON II 3.0



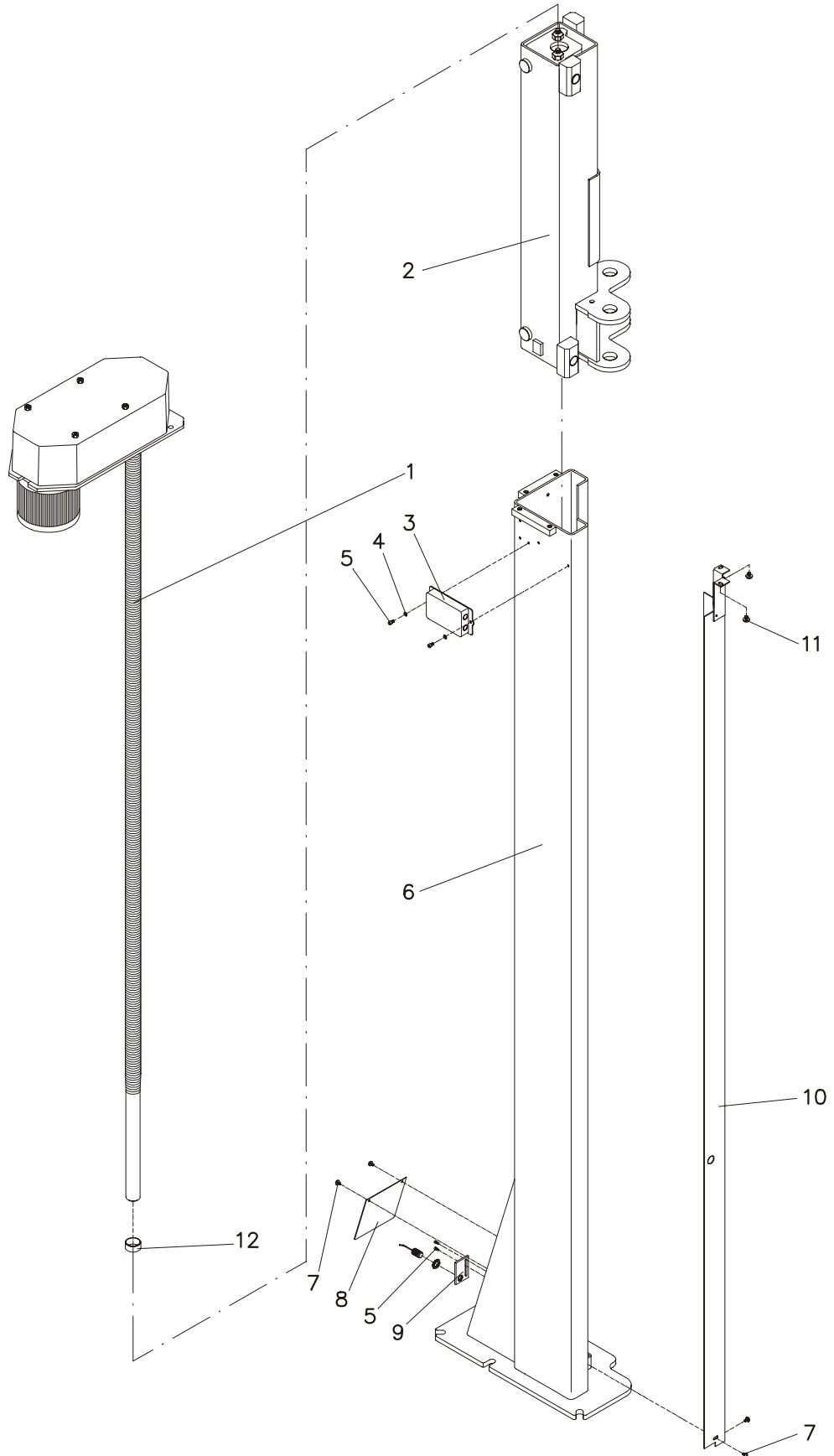
Item	Description
1	Drive Assembly, Left Side
2	Carriage
3	Branch Box
4	Washer A6.4
5	Allen Screw M6x10
6	Column, Left Side (Slave Column)
7	Binding Head Screw M6x8
8	Cover Plate, Bottom
9	Switch Plate
10	Lifting Screw Cover
11	Binding Head Screw M8x10
12	Plain Bearing GLY.PG 404420 A

1.1.3 Master Column ECON II 3.5



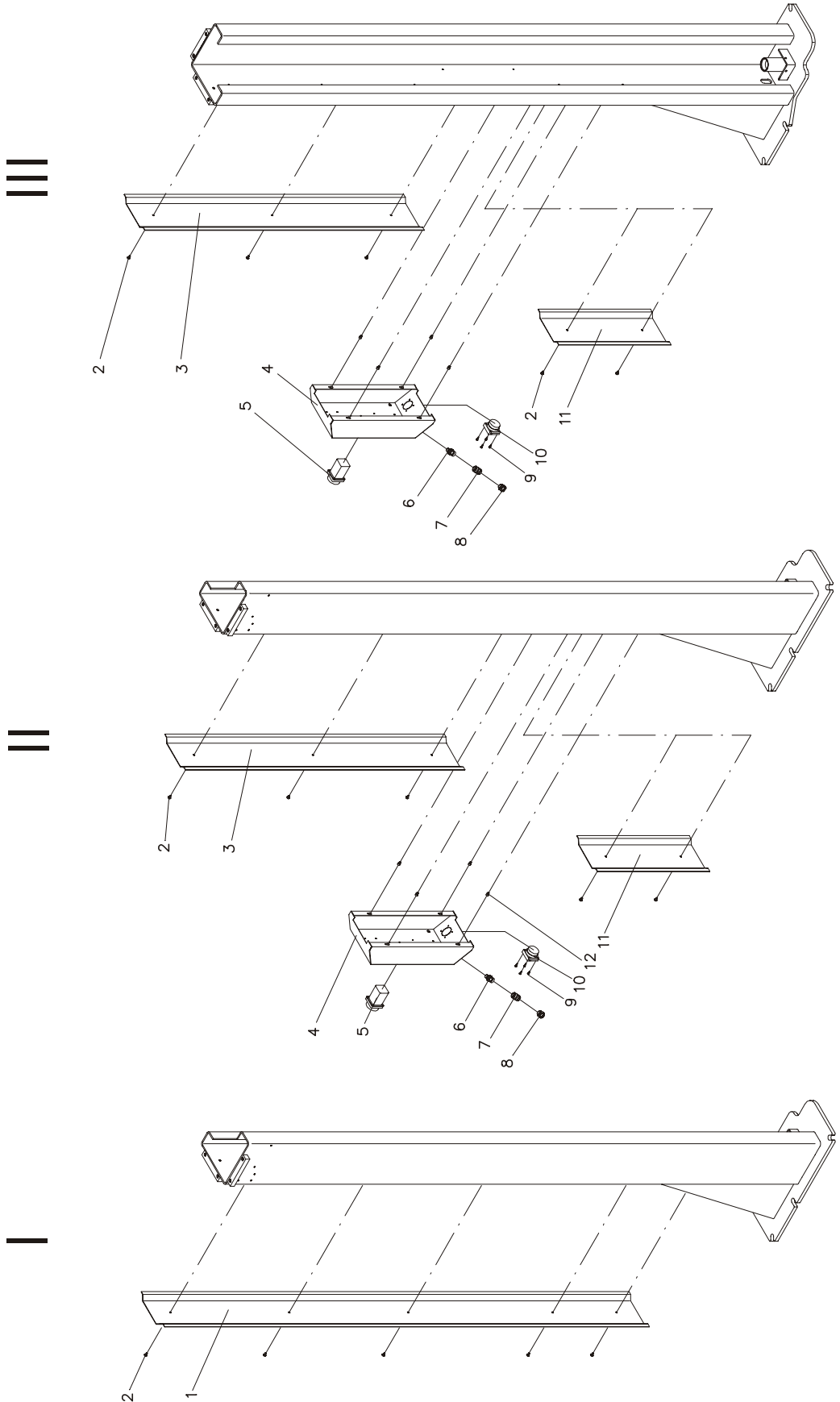
Item	Description
1	Binding Head Screw M6x8
2	Cover Plate, Bottom
3	Allen Screw M6x10
4	Switch Plate
5	Column, Right Side (Master Column)
6	Carriage
7	Drive Assembly, Right Side
8	Plain Bearing GLY.PG 404420 A
9	Lifting Screw Cover
10	Binding Head Screw M8x10

1.1.4 Slave Column ECON II 3.5



Item	Description
1	Drive Assembly, Left Side
2	Carriage
3	Branch Box
4	Washer A6.4
5	Allen Screw M6x10
6	Column, Left Side (Slave Column)
7	Binding Head Screw M6x8
8	Cover Plate, Bottom
9	Switch Plate
10	Lifting Screw Cover
11	Binding Head Screw M8x10
12	Plain Bearing GLY.PG 404420 A

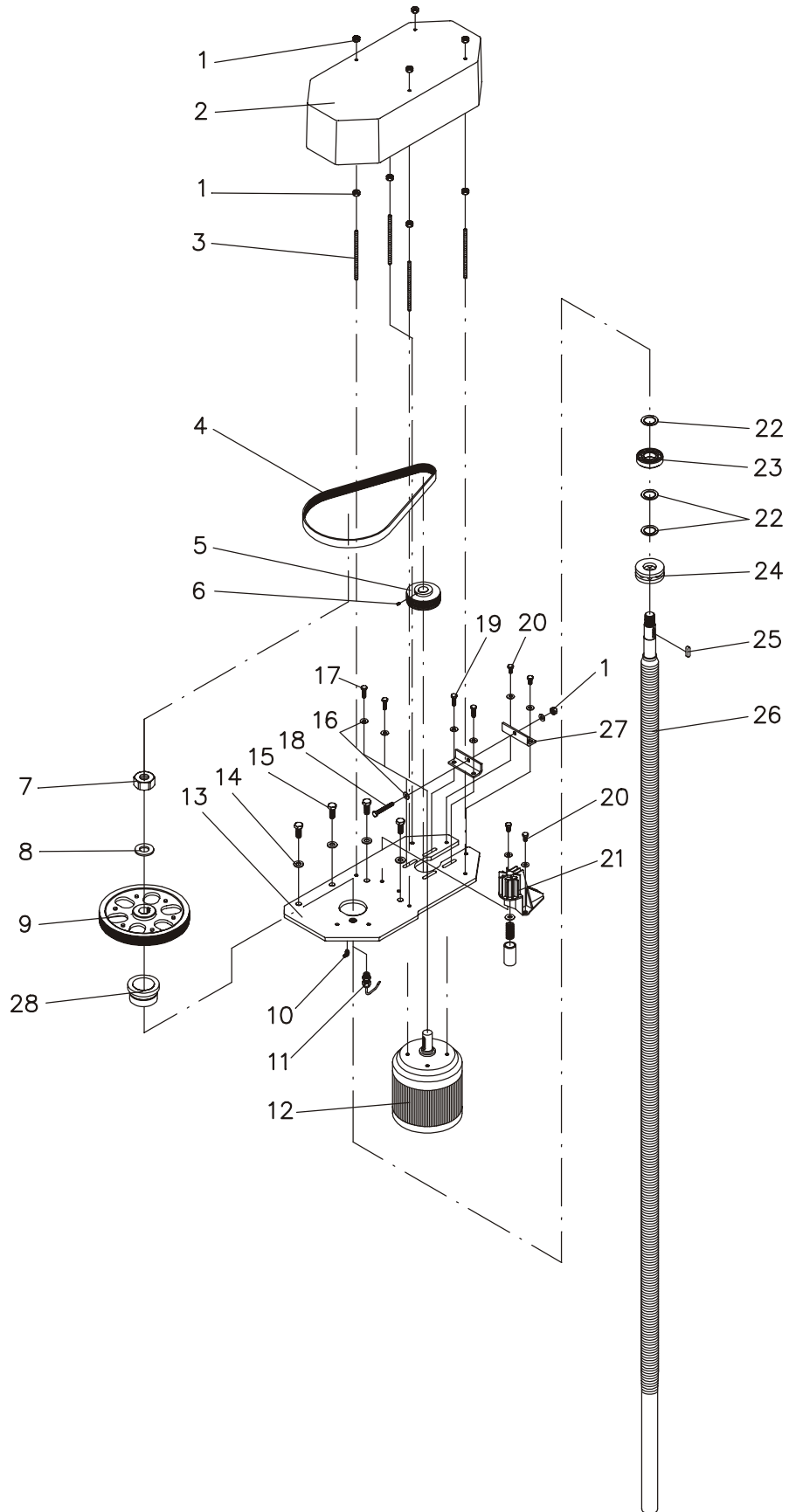
1.1.5 Control Box



- I Slave Column without Control Box
- II Slave Column with Control Box and Power Supply Set
- III Master Column (Optional Power Supply Set)

Item	Description
1	Cable Channel, Full Length
2	Binding Head Screw M5x10
3	Cable Channel, Upper Part
4	Control Box
5	Main Switch
6	Straight Coupler
7	Bulkhead Stuffing Box
8	Quick Coupler R1/4"
9	Tapping Screw 3.9x16
10	Machine Socket
11	Cable Channel, Lower Part
12	Allen Screw M6x8

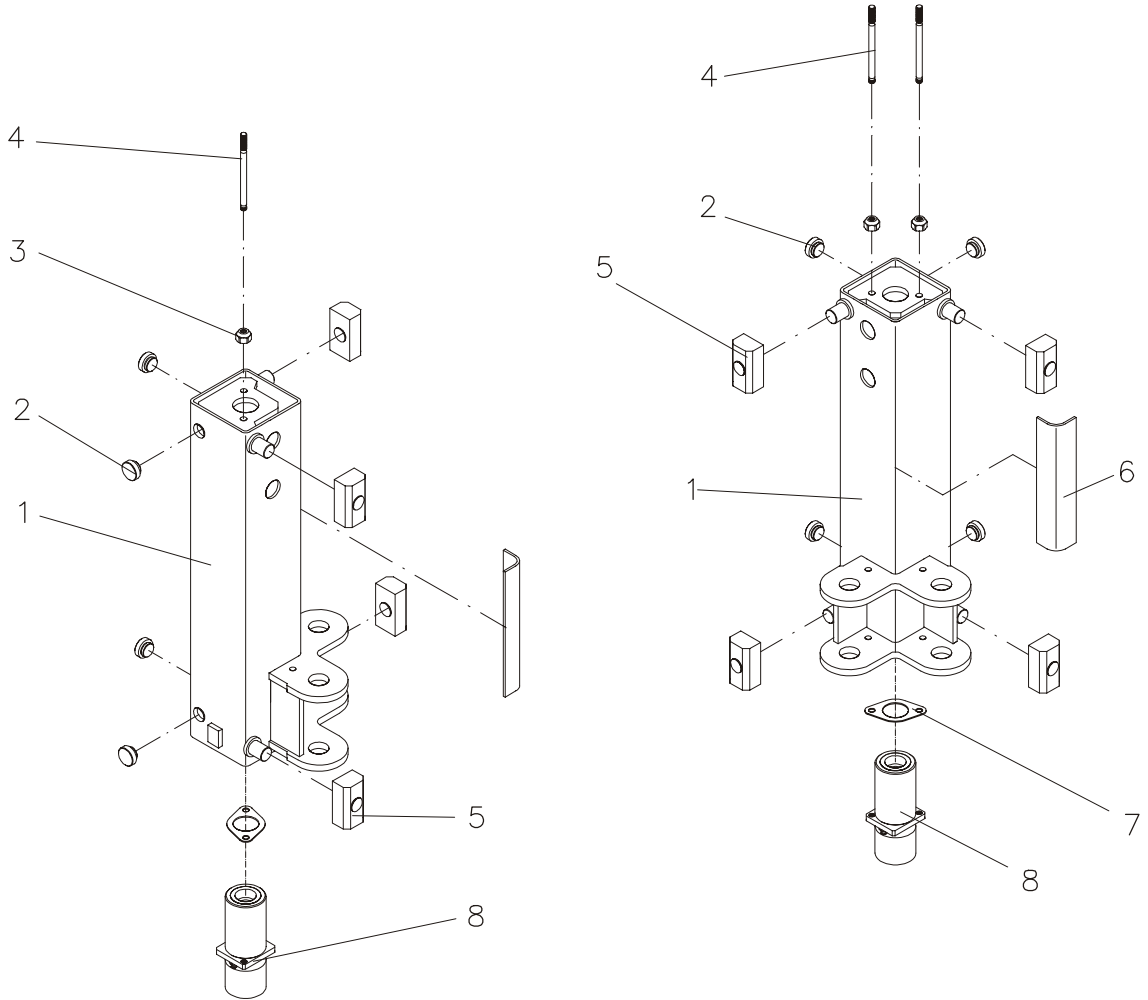
1.2 Drive Assembly



Item	Description
1	Hex Nut M8
2	Cover Hood
3	Stud Bolt M8x150
4	Ribbed V-Belt 10 PJ 1016 Ribbed V-Belt 10 PJ 1055
5	Motor Pulley Ø85 Motor Pulley Ø65
6	Threaded Pin M5x8
7	Hex Nut M24
8	Washer A25
9	Pulley
10	Lubricator H3 M6 (90)
11	Proximity Switch Namur M18 5 mm
12	Three-Phase Motor 2.2 kW, Four-Pole 230/400 V B14
13	Motor Mounting Plate
14	Washer A13
15	Hex Head Cap Screw M12x30
16	Washer A8.4
17	Hex Head Cap Screw M8x20
18	Hex Head Cap Screw M8x60
19	Hex Head Cap Screw M8x25
20	Hex Head Cap Screw M8x16
21	Brake
22	Shim Ring 30x42x2.5
23	Radial Ball Bearing 6006 2RS
24	Thrust Ball Bearing 51 206
25	Feather Key A8x7x30
26	Lifting Screw
27	Belt Tensioner
28	Lifting Screw Seat

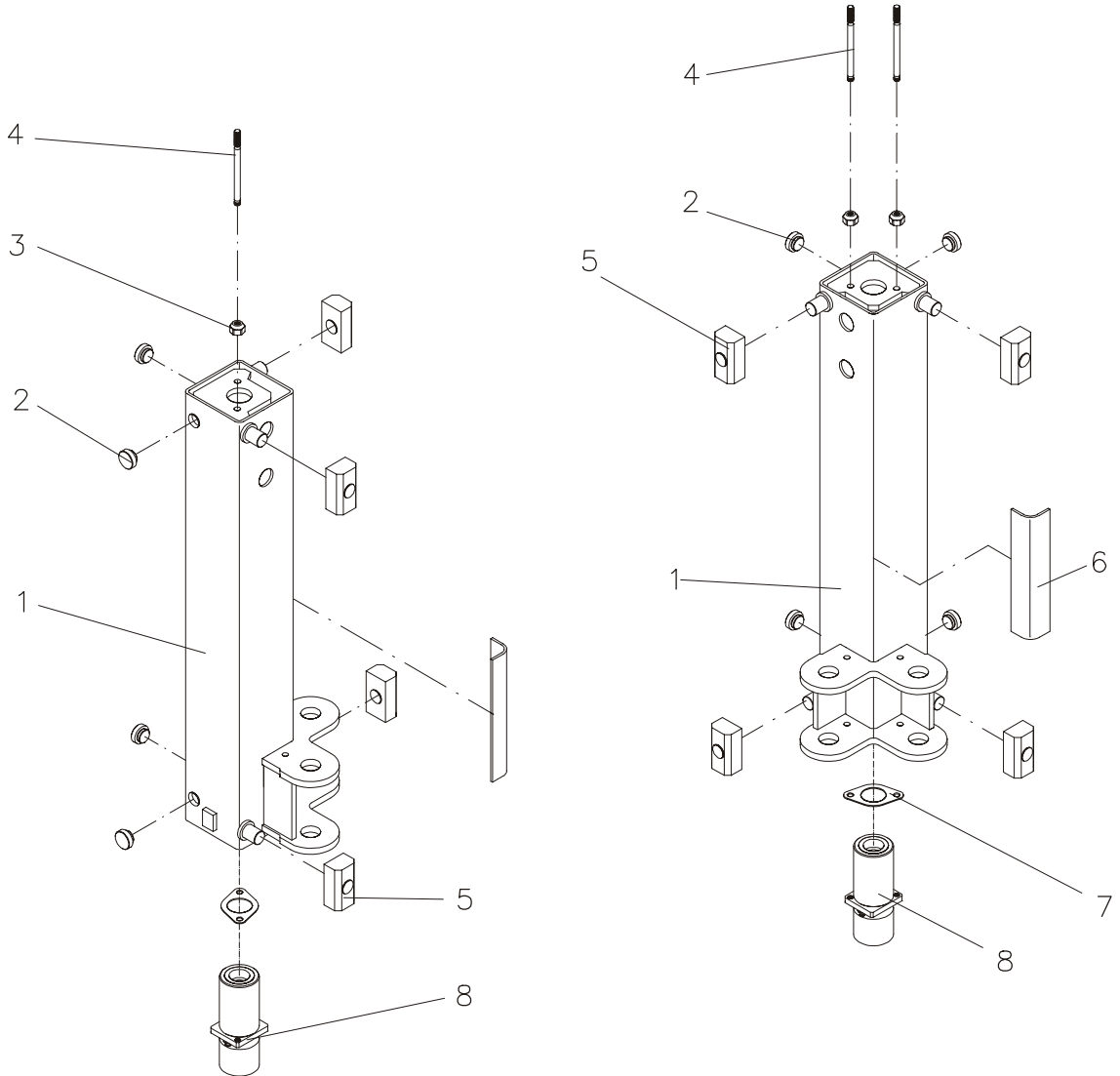
1.3 Carriages

1.3.1 ECON II 3.0



Item	Description
1	Carriage
2	Slider Block, Round
3	Hex Nut M12, Self-locking
4	Stud Bolt M12x165
5	Slider Block
6	Felt Pad
7	Retaining Washer
8	Load and Safety Nut Package

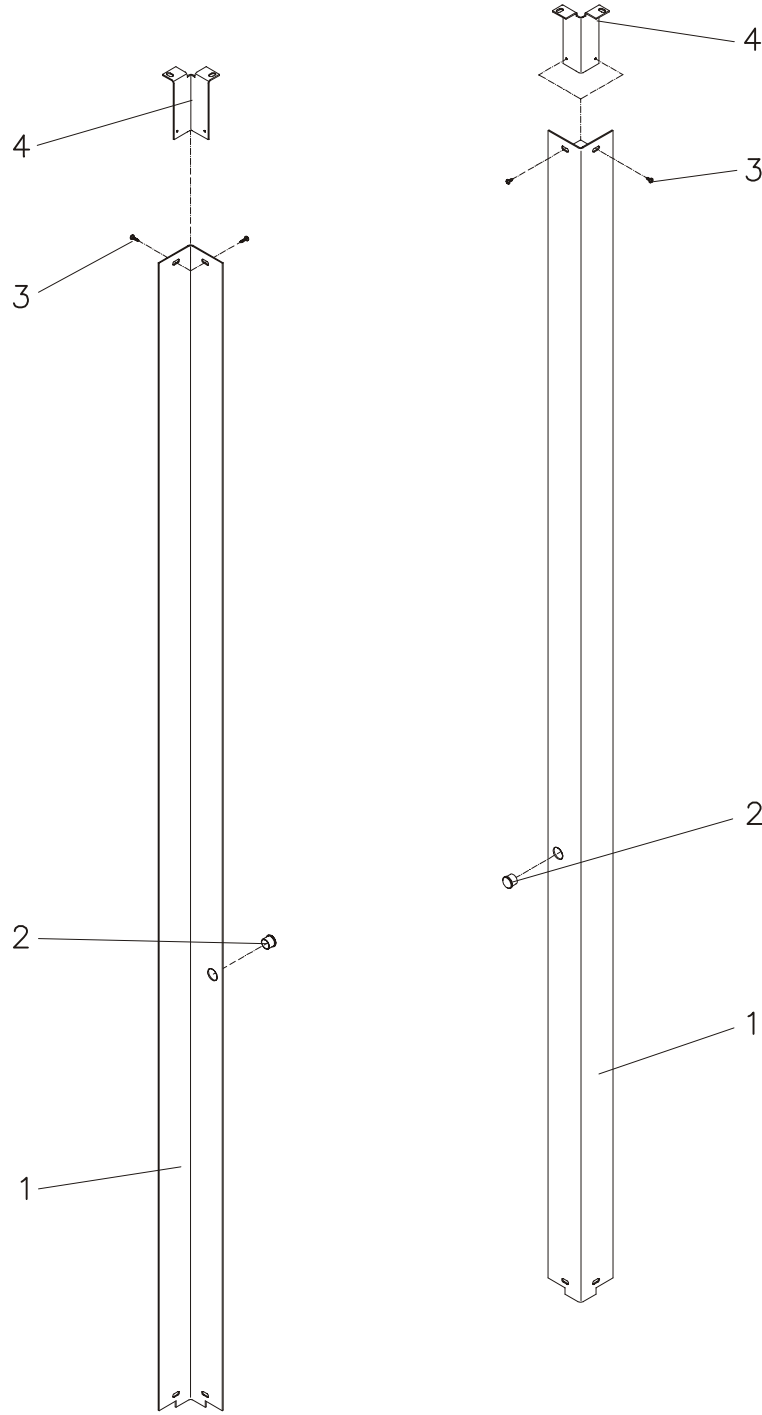
1.3.2 ECON II 3.5



Item	Description
1	Carriage
2	Slider Block, Round
3	Hex Nut M12, Self-locking
4	Stud Bolt M12x165
5	Slider Block
6	Felt Pad
7	Retaining Washer
8	Load and Safety Nut Package

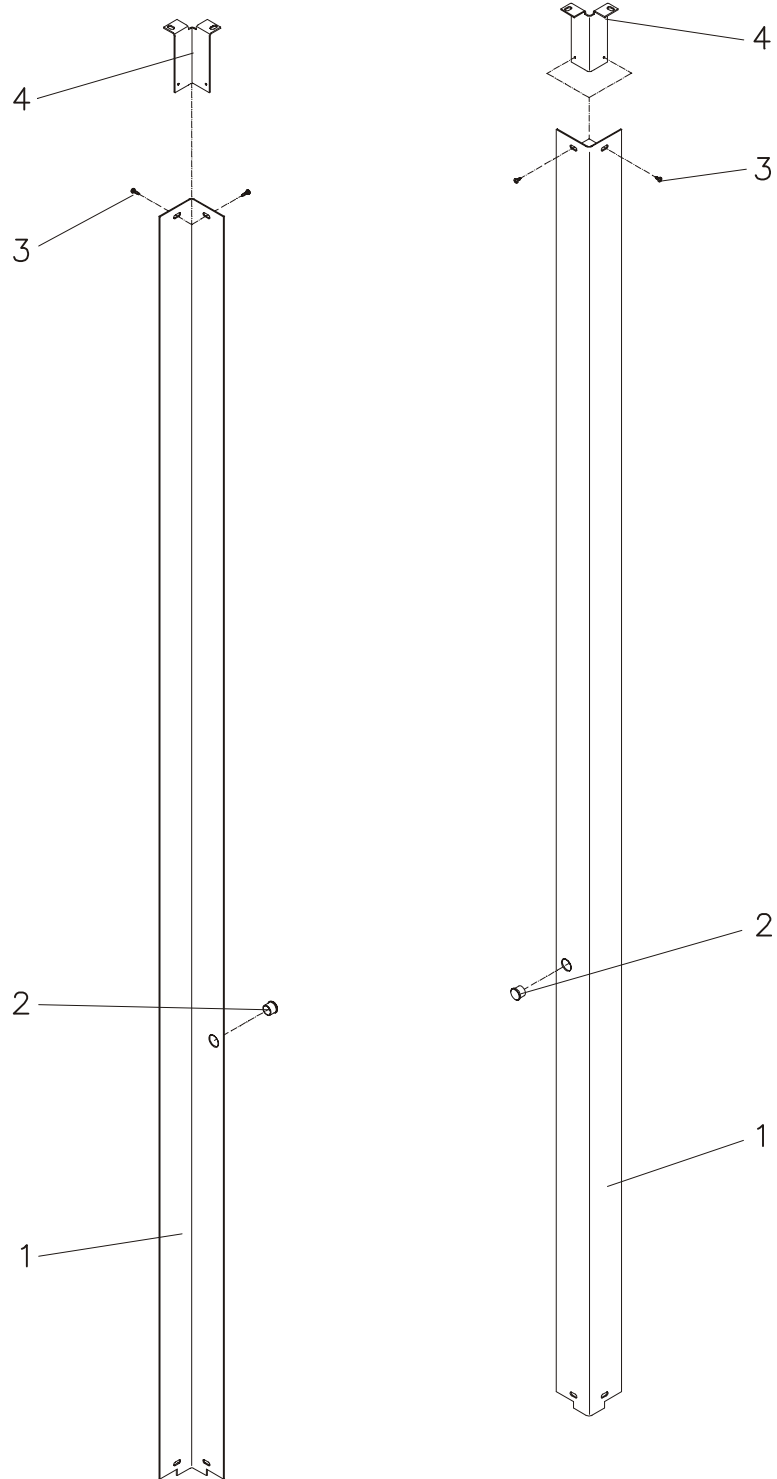
1.4 Lifting Screw Cover

1.4.1 ECON II 3.0



Item	Description
1	Cover
2	Lamellar Plug
3	Tapping Screw 3.9x16
4	Mounting Angle

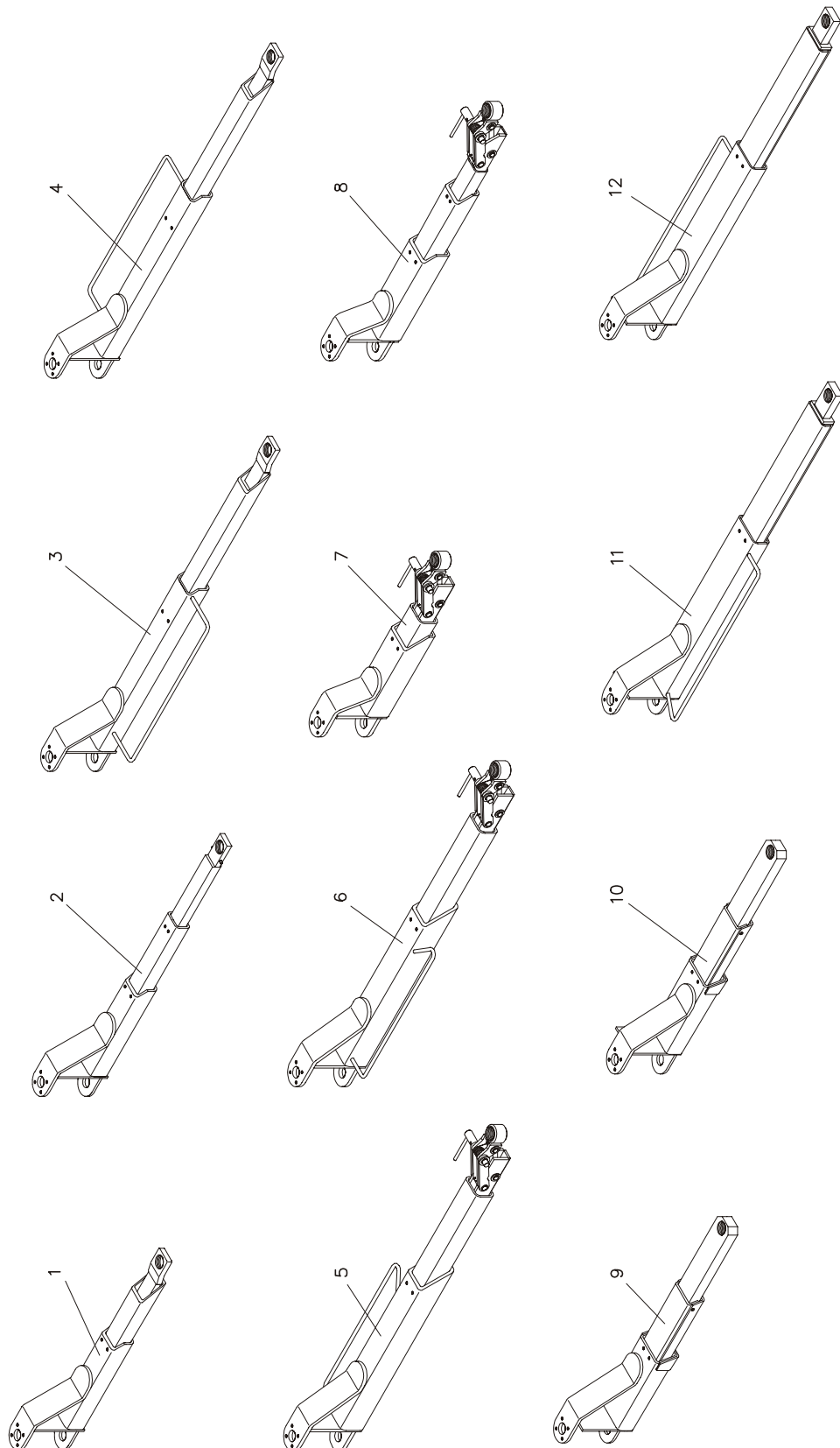
1.4.2 ECON II 3.5



Item	Description
1	Cover
2	Lamellar Plug
3	Tapping Screw 3.9x16
4	Mounting Angle

1.5 Support Arms

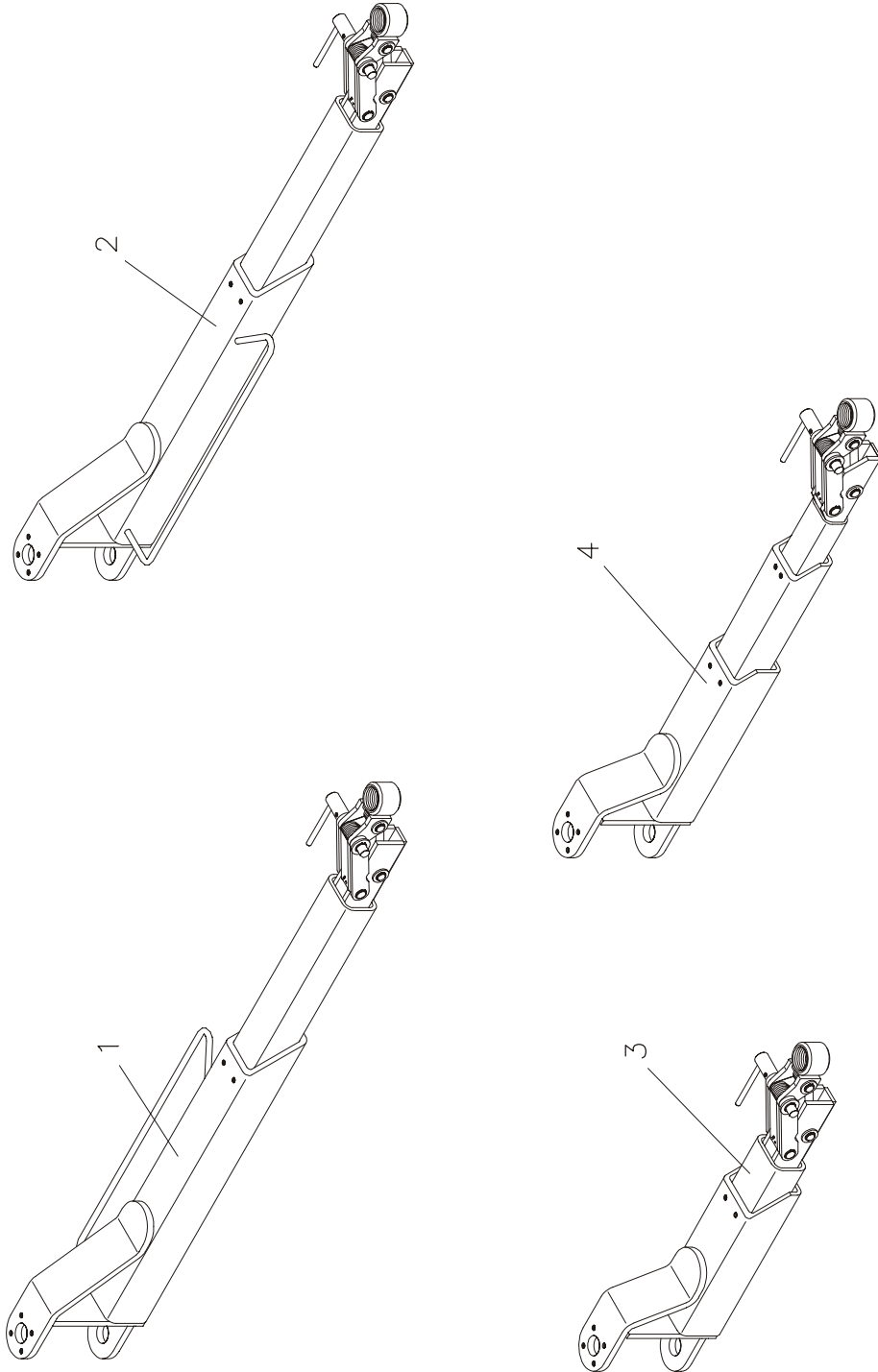
1.5.1 ECON II 3.0



Item	Description
1	Support Arm, Short (540...854)
2	Support Arm, Telescopic (559...1180)
3	Support Arm, Left Side
4	Support Arm, Right Side
5	Support Arm, Long, Right Side, Lockable (Parallelogram-Type Adapter)
6	Support Arm, Long, Left Side, Lockable (Parallelogram-Type Adapter)
7	Support Arm, Short, Lockable (Parallelogram-Type Adapter)
8	Support Arm, Telescopic (726...1180), Lockable (Parallelogram-Type Adapter)
9	Support Arm, Telescopic, Right Side (Sports Car)
10	Support Arm, Telescopic, Left Side (Sports Car)
11	Support Arm, Long, Left Side (Sports Car)
12	Support Arm, Long, Right Side (Sports Car)

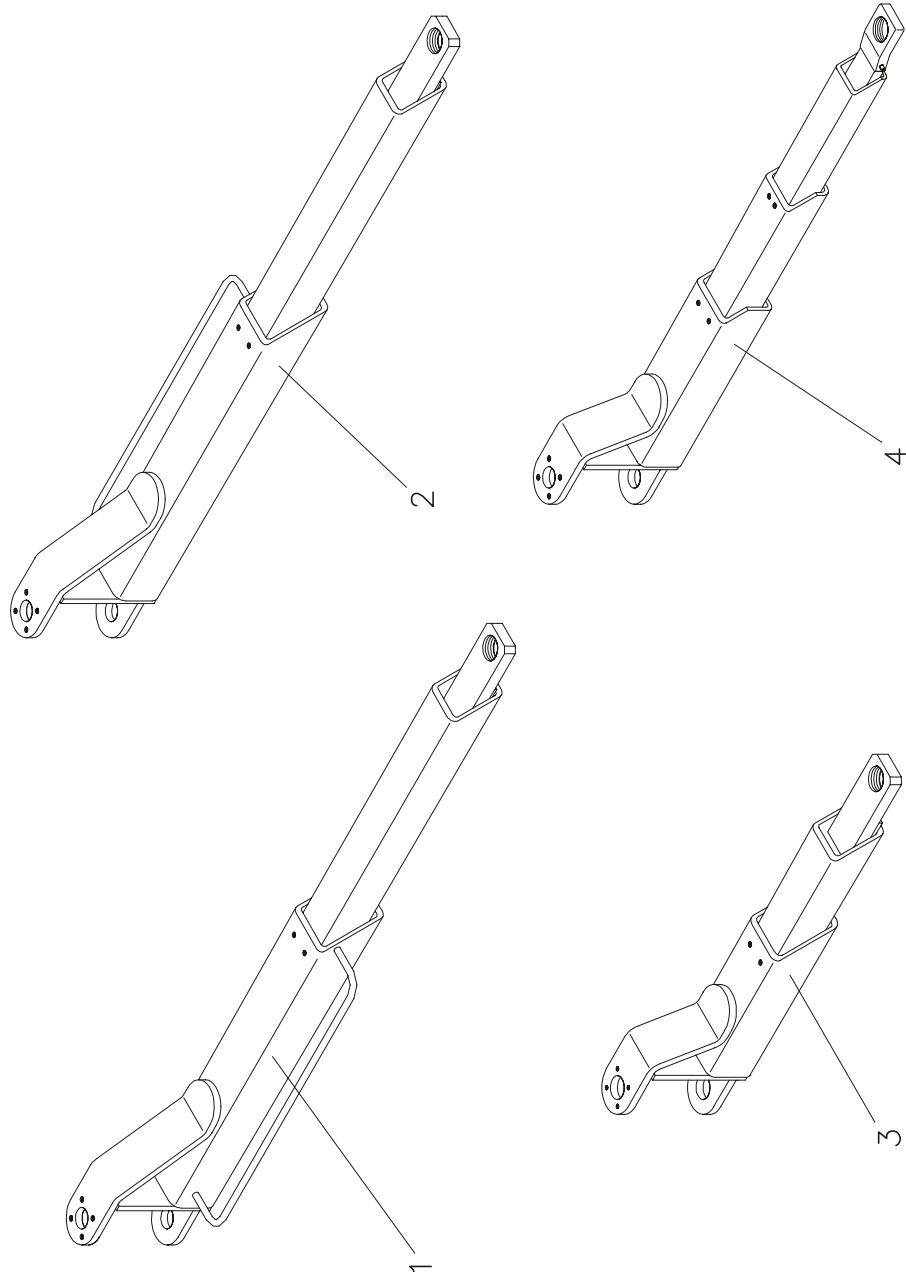
1.5.2 ECON II 3.5

1.5.2.1 Support Arms with Parallelogram-Type Adapters



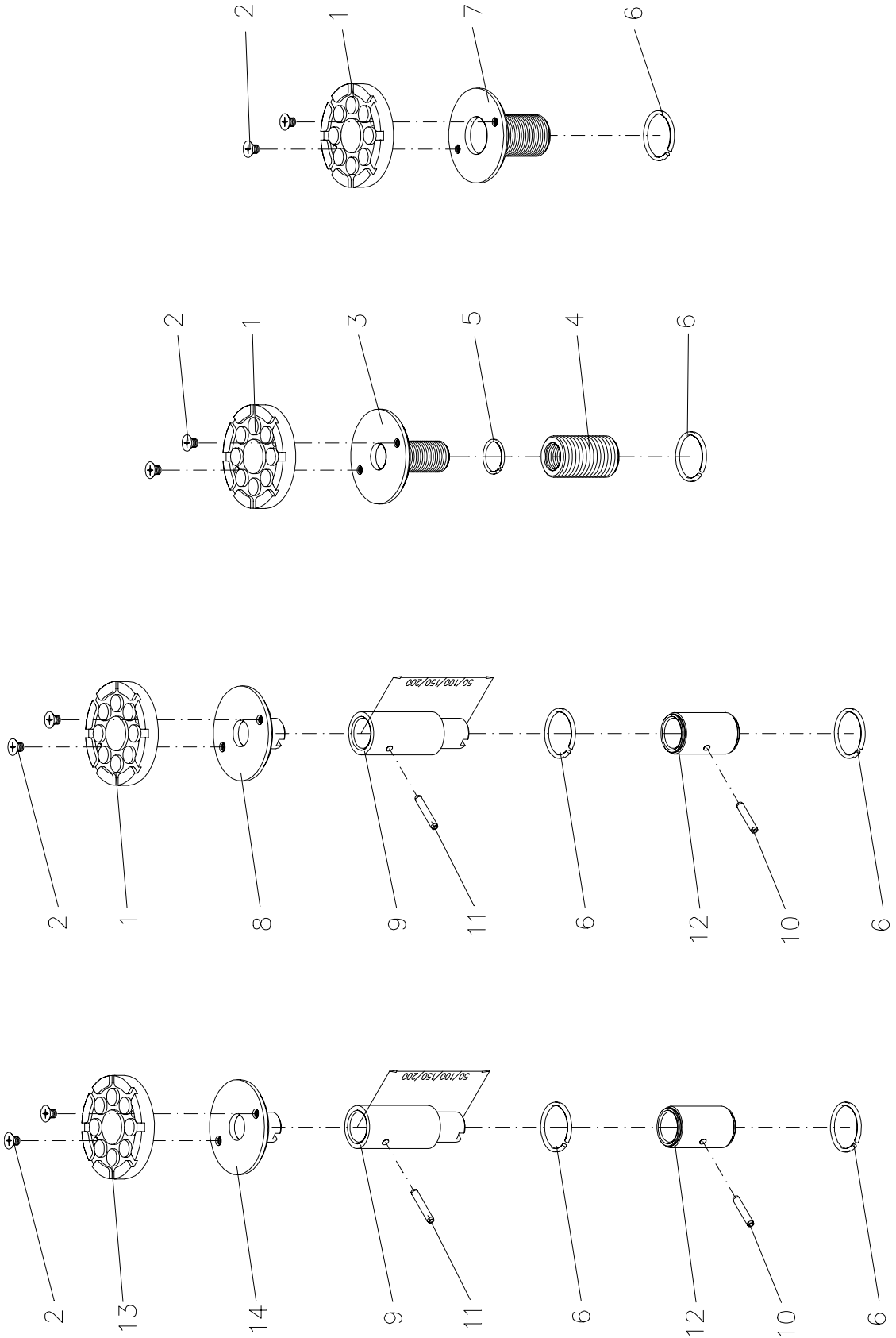
Item	Description
1	Support Arm, Long, Right Side, Lockable (Parallelogram-Type Adapter)
2	Support Arm, Long, Left Side, Lockable (Parallelogram-Type Adapter)
3	Support Arm, Short, Lockable (Parallelogram-Type Adapter)
4	Support Arm, Telescopic (726...1180), Lockable (Parallelogram-Type Adapter)

1.5.2.2 Support Arms for Disk Adapters



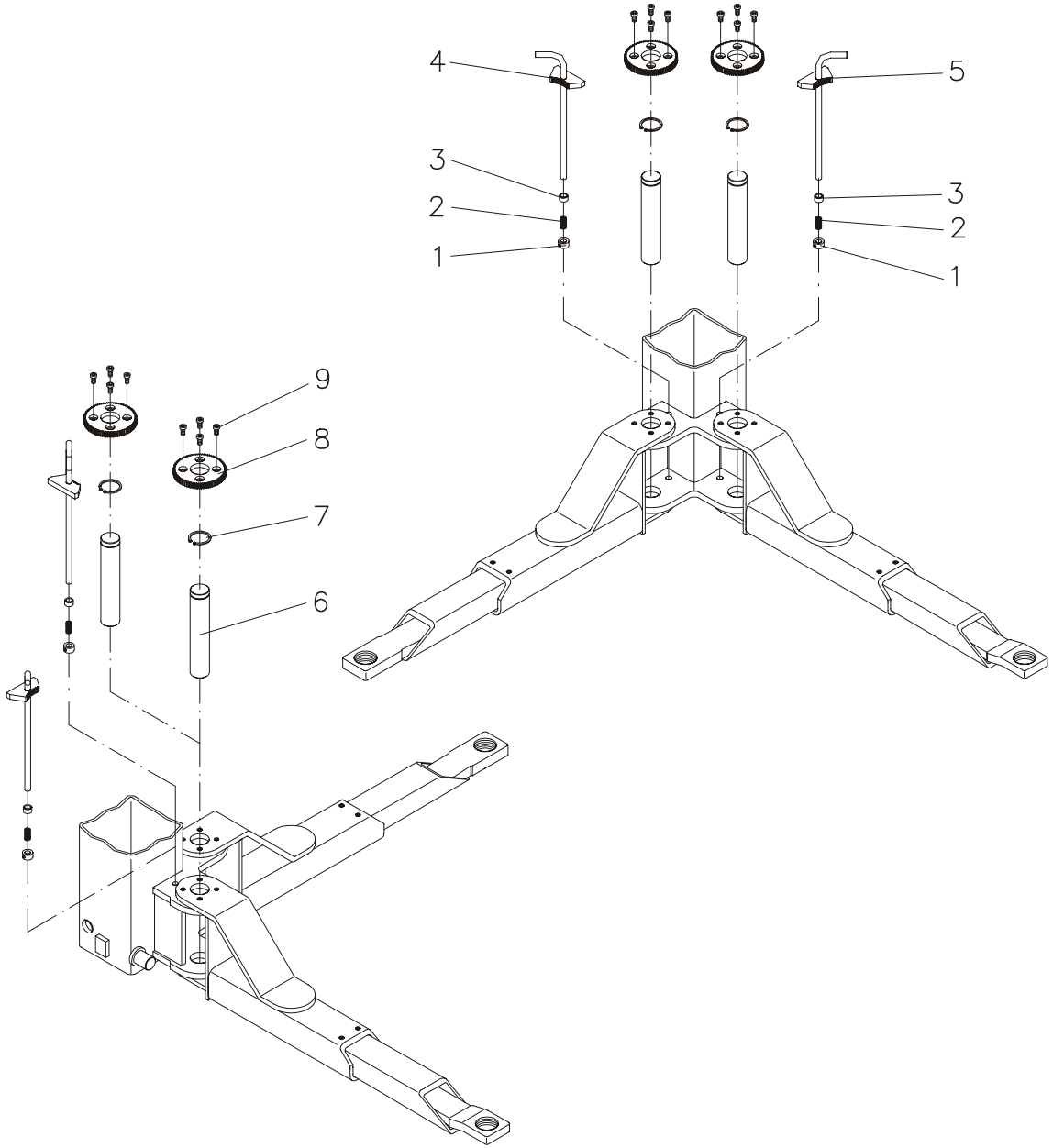
Item	Description
1	Support Arm, Long, Left Side
2	Support Arm, Long, Right Side
3	Support Arm, Short (570...815)
4	Support Arm, Telescopic (589...1180)

1.6 Disk Adapters



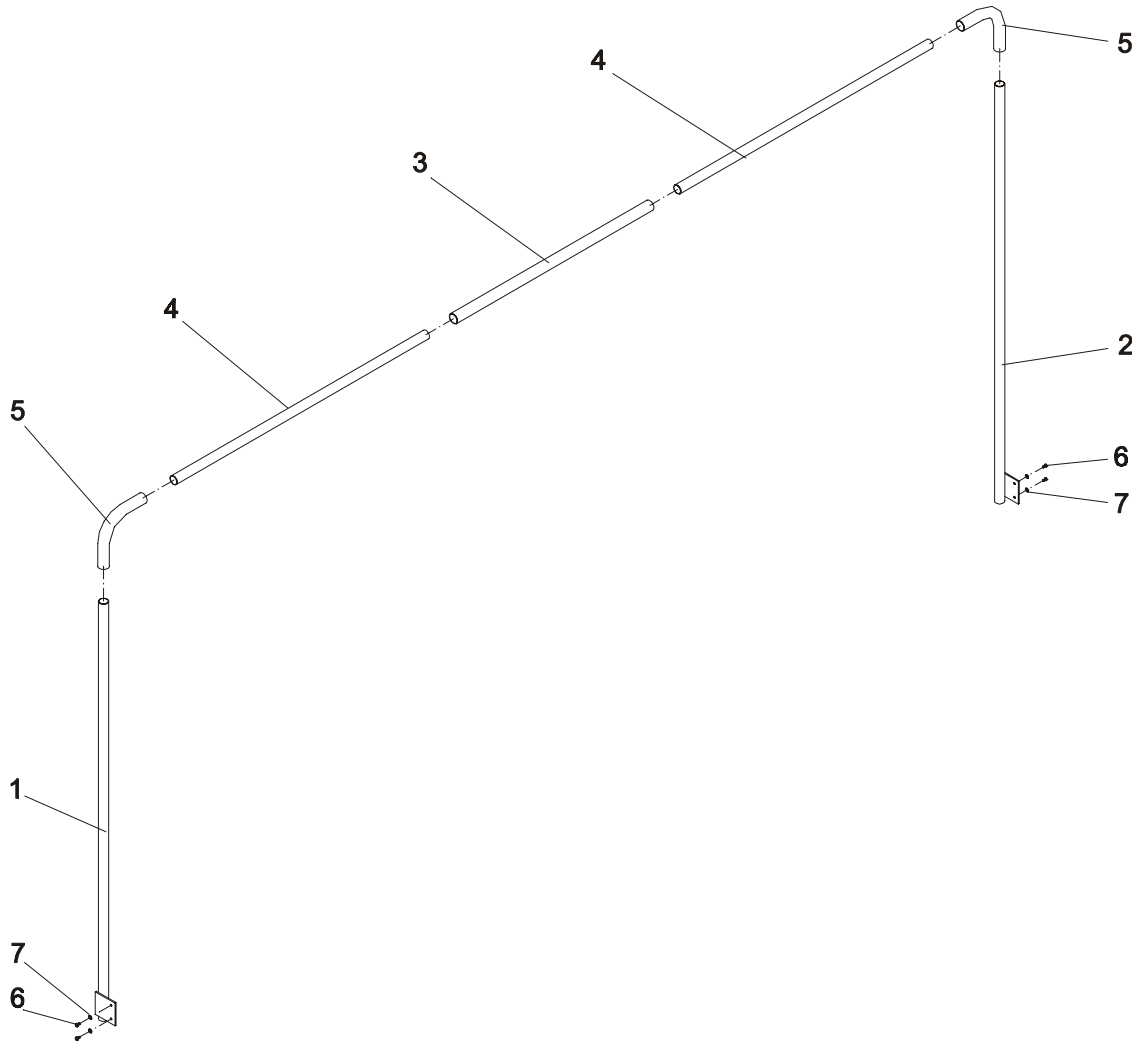
Item	Description
1	Rubber Pad
2	Flat Head Screw M8x12
3	Disk Adapter 50, Double Disk Adapter 60, Double Disk Adapter 70, Double Disk Adapter 80, Double
4	Extender Thread 50, Double Extender Thread 60, Double Extender Thread 70, Double Extender Thread 80, Double
5	Snap Ring A32
6	Snap Ring A45
7	Disk Adapter 60 Disk Adapter 70 Disk Adapter 80
8	Disk Adapter, Plug-in
9	Adapter 50 Adapter 100 Adapter 150 Adapter 200
10	Dowel Pin 8x45
11	Dowel Pin 8x50
12	Extender Thread 50, Plug-in Extender Thread 60, Plug-in Extender Thread 70, Plug-in Extender Thread 80, Plug-in
13	Rubber Pad "Cayenne"
14	Disk Adapter "Cayenne", Plug-in

1.7 Arm Restraint



Item	Description
1	Setting Ring A12
2	Pressure Spring 1.5x13x62
3	Spacer
4	Release Pin, Left Side
5	Release Pin, Right Side
6	Arm Pin
7	Snap Ring A40x1.75
8	Gearwheel
9	Allen Screw M10x16

1.8 Overhead Cable Guide



Item	Description
1	Vertical Tube, Left Side
2	Vertical Tube, Right Side
3	Sleeve
4	Connecting Tube
5	Tube Bend
6	Hex Head Cap Screw M6x12
7	Washer A6.4